

# VersaCAMM

Roland DG Corporation

## SP-540V & SP-300V

### Inkjet Printer/Digital Die-Cutters

#### Specifications

| Model   |  | SP-540V  | SP-300V  |
|---|--|--|--|
| Printing / Cutting method   |  |  |  |
|   |  | Piezo ink-jet method / media-moving method   |  |
| Acceptable media widths   |  |  |  |
|   |  | 210 to 1371 mm (8-5/16 to 54 in.)  | 182 to 762 mm (7-3/16 to 30 in.)   |
| Printing / Cutting width *1   |  |  |  |
|   |  | Maximum 1346 mm (53 in.)   | Maximum 736 mm (29 in.)  |
| Ink cartridges  |  |  |  |
| Capacity  |  | 220 cc ±5 cc   |  |
| Color   |  | Four colors (cyan, magenta, yellow, and black)   |  |
| Printing resolution (Printing dot resolution)                         |  |  |  |
|   |  | Maximum 1,440 dpi  |  |
| Acceptable tool   |  |  |  |
|   |  | Special blade for CAMM-1 series  |  |
| Cutting speed   |  |  |  |
|   |  | 10 to 300 mm/s   |  |
| Blade force   |  |  |  |
|   |  | 30 to 300 gf   |  |
| Blade offset compensation   |  |  |  |
|   |  | 0.000 to 1,500 mm (0 to 0.0591 in.)  |  |
| Software resolution (When cutting)                                    |  |  |  |
|   |  | 0.025 mm/step (0.000984 in./step)  |  |
| Distance accuracy (When printing) *2*3                                |  |  |  |
|   |  | Error of less than ±0.3 % of distance traveled, or ±0.3 mm, whichever is greater   |  |
| Distance accuracy (When cutting) *3                                   |  |  |  |
|   |  | Error of less than ±0.4 % of distance traveled, or ±0.3 mm, whichever is greater When distance correction has been performed (when the setting for [CALIBRATION] - [CUTTING ADJ.] has been made): Error of less than ±0.2 % of distance traveled, or ±0.1 mm, whichever is greater |  |
| Repetition accuracy (When cutting) *3*4                               |  |  |  |
|   |  | ±0.1 mm or less  |  |
| Repetition between printing and cutting *3*5                          |  |  |  |
|   |  | ±0.5 mm or less  |  |
| Alignment accuracy for printing and cutting when reloading media *3*6 |  |  |  |
|   |  | Error of less than ±0.5 % of distance traveled, or ±3 mm, whichever is greater   |  |
| Media dryer   |  |  |  |
|   |  | Heating method, Setting range for the preset temperature: 35 to 50 °C (95 to 122 °F)   |  |
| Ink-fixing device   |  |  |  |
|   |  | Print heater, Setting range for the preset temperature: 35 to 50 °C (95 to 122 °F)   |  |
| Interface   |  |  |  |
|   |  | Ethernet (10BASE-T/100BASE-TX, automatic switching)  | USB interface (compliant with Universal Serial Bus Specification Revision 1.1) |
| Power-saving function   |  |  |  |
|   |  | Automatic sleep feature (compliant with the International ENERGY STAR® Office Equipment Program)   |  |
| Power supply  |  |  |  |
| Voltage and frequency   |  | AC 100 to 120 V ±10 %, 50 / 60 Hz or AC 220 to 240 V ±10 %, 50 / 60 Hz   |  |
| Required power capacity   |  | 8.8 A (100 to 120 V) or 4.7 A (220 to 240 V)   | 6 A (100 to 120 V) or 3 A (220 to 240 V)                                       |
| Power consumption   |  |  |  |
| During operation  |  | Approx. 1080 W (100 to 120 V) or 1230 W (220 to 240 V)   | Approx. 470 W (100 to 120 V) or 650 W (220 to 240 V)                           |
| Sleep mode  |  | Approx. 30 W   | Approx. 29 W   |
| Acoustic noise level  |  |  |  |
| During operation  |  | 64 dB (A) or less (according to ISO 7779)  |  |
| During standby  |  | 40 dB (A) or less (according to ISO 7779)  |  |
| Dimensions (With stand)   |  |  |  |
|   |  | 2390 (W) x 800 (D) x 1291 (H) mm (94-1/8 (W) x 31-1/2 (D) x 50-7/8 (H) in.)  | 1720 (W) x 770 (D) x 1275 (H) mm (67-3/4 (W) x 30-3/8 (D) x 50-1/4 (H) in.)    |
| Weight (With stand)   |  |  |  |
|   |  | 149 kg (329 lb.)   | 124 kg (273 lb.)   |
| Packed dimensions   |  |  |  |
|   |  | 2560 (W) x 830 (D) x 1035 (H) mm (101 (W) x 32-3/4 (D) x 40-3/4 (H) in.)   | 1890 (W) x 830 (D) x 900 (H) mm (74-1/2 (W) x 32-3/4 (D) x 35-1/2 (H) in.)     |
| Packed weight   |  |  |  |
|   |  | 200 kg (441 lb.)   | 161 kg (355 lb.)   |
| Environment   |  |  |  |
| Power on  |  | Temperature: 15 to 32 °C (59 to 90 °F) (20 °C [68 °F] or more recommended), humidity: 35 to 80 % (no condensation)   |  |
| Power off   |  | Temperature: 5 to 40 °C (41 to 104 °F), humidity: 20 to 80 % (no condensation)   |  |
| Included items  |  |  |  |
|   |  | Stand, power cord, blade, blade holder, replacement blade for separating knife, cleaning kit, software RIP, manuals, etc.  |  |

\*1 The length of printing or cutting is subject to the limitations of the program or driver.  
 \*2 Using Roland specified media, print travel of 1m, preset temperature of 25 °C (77 °F), humidity of 50 %  
 \*3 Not assured when the print heater or dryer is used.  
 \*4 Provided that media length is under 3000 mm, Temperature: 25 °C (77 °F)  
 Excluding possible shift caused by expansion / contraction of the media and / or by reloading the media  
 \*5 Provided that media length is under 3000mm, Temperature: 25 °C (77 °F).  
 Excluding possible shift caused by expansion / contraction of the media and / or by reloading the media

\*6 Media type: Roland specified media, data size: 1000 mm in the media-feed direction, 1346 mm in the carriage-movement direction.  
 No lamination, Automatic detection of crop marks at 4 points when media is reloaded.  
 During cutting, [PREFEED] menu item must be set to [ENABLE], Temperature: 25 °C (77 °F).  
 Excludes the effects of slanted movement and of expansion and contraction of the media.

#### Roland VersaWorks System Requirements

|                  |   |                      |                           |
|------------------|---|----------------------|---------------------------|
| Operating system | Windows® XP Professional Service Pack 1 or later or Windows® 2000 Service Pack 4 or later | RAM                  | 1 GB or more recommended  |
| CPU              | Pentium 4 2.0 GHz or faster recommended   | Free hard-disk space | 40 GB or more recommended |

#### Options

|                                 |   |  |   |  |  |
|---------------------------------|---|--|---|--|--|
| ECO-SOL MAX MEDIA (for Signage) | SPVCB-1270  | PVC banner, 1270 mm x 20 m (50" x 65')                         | ECO-SOL MAX MEDIA (for Decals)                | SP-SG-610G   | Gray adhesive, 610 mm (24.01") x 30 m (98.42 ft)                           |
|                                 | SP-SG-1270G   | PET semi gloss, gray adhesive, 1270 mm x 30 m (50" x 98')      |   | SP-SG-610TR  | Removable adhesive, 610 mm (24.01") x 30 m (98.42 ft)                      |
|                                 | SP-SG-1270TR  | PET semi gloss, removable adhesive, 1270 mm x 30 m (50" x 98') | ECO-SOL MAX MEDIA (for Garment Heat Transfer) | SCM-TRH-25-750   | Garment heat transfer material, 750 mm x 25 m (29.52") x (82 ft)           |
|                                 | SP-M-1270   | Matte PET film, 1270 mm x 30 m (50" x 98')                     |   | HTSP-10-500  | Special silicon paper for matte finish, 500 mm x 10 m (19.68") x (32.8 ft) |
|                                 | SPPLF-1300  | Backlit film, 1300 mm x 30 m (51-1/8" x 98')                   |   | HTTA-10-500  | Application film, 500 mm x 10 m (19.68" x 32.8 ft)                         |
|                                 | SCM-GBMW-50-1180  | Polyethylene banner, 1180 mm x 50 m (46-7/16" x 164')          | ECO-SOL MAX INK                               | ESL3-MG  | Magenta, 220 cc  |
| SCM-GPPG-50-914                 | White glossy photo paper, 914 mm x 50 m (36" x 164')                      |  | ESL3-YE                                       | Yellow, 220 cc   |  |
| SCM-GPPG-50-1270                | White glossy photo paper, 1270 mm x 50 m (50" x 164')                     |  | ESL3-CY                                       | Cyan, 220 cc   |  |
| SCM-GPET40-500                  | Polyester gold gloss film, adhesive, 500 mm (19.68") x 40 m (131.23 ft)   |  | ESL3-BK                                       | Black, 220 cc  |  |
| SCM-GSPET40-500                 | Polyester silver gloss film, adhesive, 500 mm (19.68") x 40 m (131.23 ft) | Blades   | ZEC-U5022                                     | For thick, reflective and fluorescent vinyl, 2 pcs.      |  |
| SCM-GGPVC-40-610                | PVC monomeric gold film, adhesive, 610 mm (24.01") x 40 m (131.23 ft)     |  | ZEC-U5025                                     | For thick, reflective and fluorescent vinyl, 5 pcs.      |  |
| SCM-GSPVC-40-610                | PVC monomeric silver film, adhesive, 610 mm (24.01") x 40 m (131.23 ft)   | Blade Holders  | XD-CH3  | Blade holder with blade extension abjuser, made of resin |  |
| SP-M-610                        | Matte PET film, 610 mm (24.01") x 30 m (98.42 ft)                         | Take-up Rollers  | TU-550  | For SP-540V  |  |
|                                 |   |  | TU-300  | For SP-300V  |  |

An ENERGY STAR® Partner, Roland DG Corporation has determined that this product meets the ENERGY STAR guidelines for energy efficiency.  
 ENERGY STAR is a U.S. registered mark.



ISO 14001 and ISO 9001:2000 Certified  
 Roland pursues both environmental protection and continuous quality improvement. Under the philosophy of preserving the environment and human health, Roland DG is actively working to abolish organic solvents in production, to reduce and recycle waste, to reduce power use, and to purchase recycled products. Roland DG constantly strives to provide the most highly reliable products available.



Roland reserves the right to make changes in specifications, materials or accessories without notice. Your actual output may vary. For optimum output quality, periodic maintenance to critical components may be required. Please contact your Roland dealer for details. No guarantee or warranty is implied other than expressly stated. Roland shall not be liable for any incidental or consequential damages, whether foreseeable or not, caused by defects in such products. PostScript is a trademark of Adobe Systems Incorporated. All other trademarks are the property of their respective owners.

AUTHORIZED DEALER:

Printed in Japan. RDG-90311 '07 AUG. C-3 G-S

www.rolanddg.com



CLEARANCE SALE

ECO-SOL MAX PRINTER/CUTTER SP-540V  
**54"**

ECO-SOL MAX PRINTER/CUTTER SP-300V  
**30"**

# Do It All



# VersaCAMM. The Perfect Fit

VersaCAMM is Roland's best-selling integrated print/cut solution and everything you could ask for in a low-cost digital printer. Available in both 30-inch-wide and 54-inch-wide models, VersaCAMM delivers 4-color inkjet printing and precision digital die-cutting in one device. Now you can print and cut a wide variety of applications that last up to three years outdoors without lamination.\*

\*Three years outdoor durability is based on accelerated weather tests conducted by Roland DG. Results may vary depending upon location and application. Severe applications, such as floor and vehicle graphics, require lamination.



**VersaCAMM**  
Roland DG Corporation

**54" ECO-SOL MAX Printer/Cutter**



**SP-540V**

**30" ECO-SOL MAX Printer/Cutter**



**SP-300V**

## ECO-SOL MAX INK — Durable and Safe to Use

ECO-SOL MAX features significant new enhancements including faster drying time, improved scratch resistance, higher density, and wider color gamut with both coated and uncoated substrates. Virtually odorless, ECO-SOL MAX does not require any special ventilation or environmental equipment.



## Keeping Costs Low

The combination of an integrated heating system and ECO-SOL MAX allows the VersaCAMM to print on a wide variety of commercially available media. Choose from uncoated vinyl and banner materials for lower production costs, or Roland's premium SOL MEDIA, including backlit and glossy paper, for

dependable indoor and outdoor use. As always, Roland provides unparalleled support, including printing profiles for the most popular media.

## One Complete Solution for Printing & Digital Die-Cutting

Whether you use it as a printer, printer/cutter or stand-alone vinyl cutter, VersaCAMM will provide dependable performance. This three-in-one versatility allows you to handle a wide variety of jobs including even the most complex applications. As a cutter, VersaCAMM digitally die-cuts decals, signs, labels, etc., quickly and precisely. Once an image has been printed, it can be automatically die-cut without having to reload or reposition the



media. If lamination is needed, Roland's unique Quadralign® optical registration system automatically generates crop marks at all four corners, allowing you to remove a print, laminate and then reload it for letter perfect die-cutting.

## A Host of Advanced Features

- An automatic sheet cutter for separating output after it has been printed.
- A sensor that produces an audible warning when ink is running low.
- A media tracking system allows you to record media changes and measure the media you have remaining.
- An adjustable print head height for the SP-540V.
- The SP-540V includes five detachable middle pinch rollers, ensuring precision media feeding for quality printing even on heavyweight banner stock.

## Roland VersaWorks® — Advanced RIP Software For Your VersaCAMM

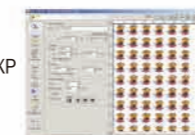


Roland's most advanced RIP, VersaWorks, is both incredibly powerful and amazingly easy to use. VersaWorks features an efficient

graphical user interface (GUI) that allows users to easily import files from their favorite programs and to maximize their Roland inkjets without a lengthy learning curve. Simply click on buttons to open menus. Drag and drop files to the printer queue. An automatic update feature ensures that you are always working with the latest VersaWorks version and profiles. VersaWorks is compatible with Windows® 2000/XP Professional and Windows Vista™.

## More VersaWorks Features:

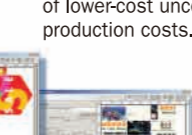
- Wide variety of convenient layout functions includes scaling, cropping, rotating, auto layout, tiling and more.
- Built upon the latest Adobe® PostScript® 3™ RIP engine which supports popular software and common file formats such as TIFF, JPEG, EPS, PostScript and PDF 1.5.
- Includes advanced color management features developed exclusively for Roland inkjet printers such as calibration, linearization, software proofing and an ICC Profile Creating Wizard.
- Roland@NET provides automatic updating of software and media profiles, including support for a wide variety of lower-cost uncoated media, resulting in lower overall production costs.



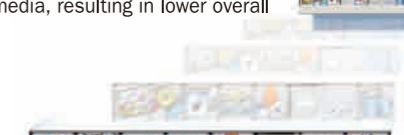
• Multiple copies of single image



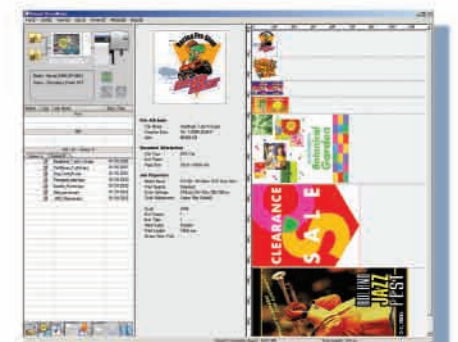
• Auto Layout



• Tiling



• Buttons on main menu open most functions.



• VersaWorks® main menu

